



Scan to know more

INDIA'S  
**No. 1**  
STRUCTURAL STEEL TUBE COMPANY



## INNOVATIVE STEEL SOLUTIONS FOR MODERN SPACES



### Corporate Office

SG Centre, 37C, Block A, Sector 132, Noida, Uttar Pradesh 201304, India  
T : +91-120 6918000 F : +91-120 4041444

Stay connected. Stay updated.

[f](#) [in](#) [x](#) [yt](#) / APL APOLLO | [ig](#) / APL APOLLO OFFICIAL | TOLL FREE: 1800-102-3737

[info@aplapollo.com](mailto:info@aplapollo.com) | [www.aplapollo.com](http://www.aplapollo.com)



\*India's No. 1 by Market Share



# INDEX

|                                |    |
|--------------------------------|----|
| About SG Group .....           | 2  |
| About APL Apollo .....         | 2  |
| APL Apollo D Section .....     | 3  |
| APL Apollo Fence .....         | 4  |
| APL Apollo Octagon .....       | 5  |
| APL Apollo Oval .....          | 6  |
| APL Apollo Mechanical .....    | 7  |
| APL Apollo Elliptical .....    | 8  |
| APL Apollo Small Section ..... | 9  |
| APL Apollo Steel Plank .....   | 10 |
| APL Apollo Alpha .....         | 11 |
| APL Apollo Handrail .....      | 12 |
| APL Apollo Chaukaht .....      | 13 |
| APL Apollo Narrow .....        | 16 |
| APL Apollo Z+.....             | 17 |
| APL Apollo Taper .....         | 18 |
| Our Nationwide Presence .....  | 19 |





Sudesh Group

Sudesh Group is India's leading Steel Tubes and PVC Pipes manufacturer with 14 plants across different locations in the country. It's a pioneer in steel tubes of different types and shapes. For over 3 decades, SG Group has been revolutionizing the Steel Tubes manufacturing industry.



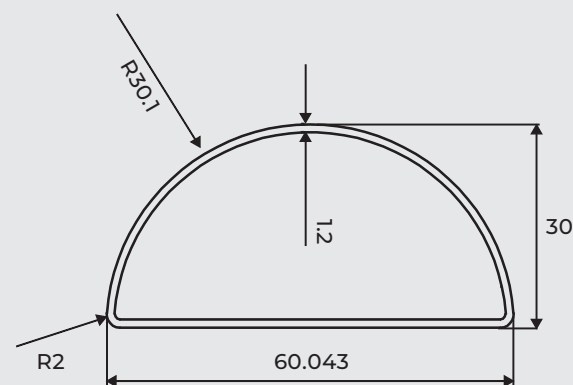
APL Apollo, a part of SG Group, is the country's largest manufacturer of steel pipes and tubes. Using High Frequency Induction Welding Technique (HFIW), APL Apollo has a capacity to produce 3.6 million tonnes of pipes per annum. The company is the unrivalled pioneer of Direct Forming Technology (DFT) as well as many other innovative products in the country.







**DSECTION<sup>®</sup>**



**Applications/Advantages:**

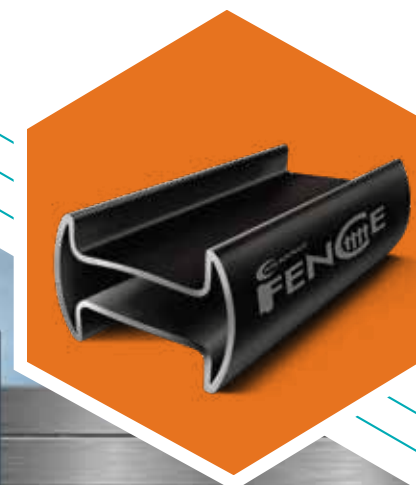
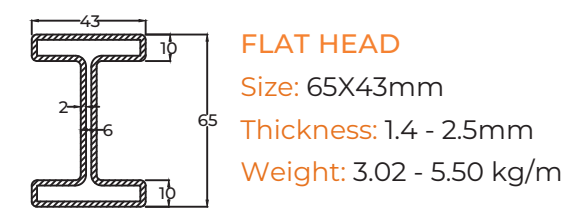
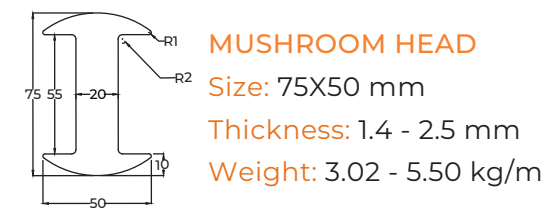
- Used in making railings for balconies, roofs etc.
- Lightweight, enabling easy movement
- Crafted with precision ensuring uniformity

Size: 60X30 mm | Thickness: 1 - 2 mm | Weight: 1.17 - 2.29 kg/m

**APLAPOLLO<sup>®</sup>**  
**FENCE<sup>®</sup>**

**Applications/Advantages:**

- High strength to withstand pressure
- Greater durability to endure severe conditions
- Used in Fencing post & Fencing solution



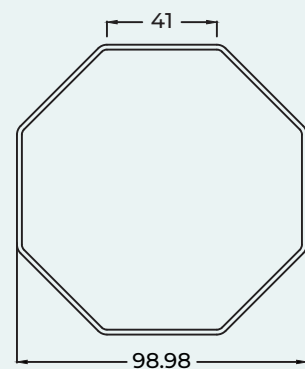
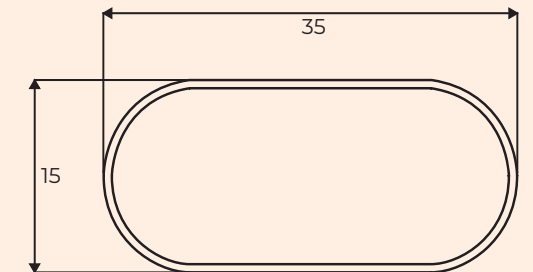




#### Applications/Advantages:

- Used in making steel furniture, gym equipment and other fabrication work
- High strength to withstand pressure
- Great durability, able to endure severe conditions

| Size     | Thickness | Weight(kg/m) |
|----------|-----------|--------------|
| 35X15mm  | 1.0 - 2mm | 0.67 - 1.28  |
| 70X40mm  | 1.2 - 2mm | 1.71 - 2.82  |
| 115X42mm | 1.2 - 3mm | 2.58 - 6.33  |
| 107X57mm | 1.2 - 3mm | 2.63 - 6.45  |



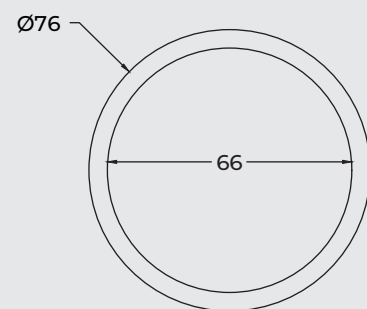
#### Applications/Advantages

- Widely used in furniture, railings, solar panels and lighting poles
- Easy fabrication and looks fancy
- Dimensional accuracy
- Unbeatable durability

| Size    | Thickness | Weight(kg/m) |
|---------|-----------|--------------|
| 41.0mm  | 0.8 - 2mm | 0.79 - 1.92  |
| 60.3mm  | 1.2 - 3mm | 1.75 - 4.24  |
| 74.5mm  | 1.2 - 3mm | 2.17 - 5.29  |
| 95.4mm  | 1.2 - 3mm | 2.78 - 6.38  |
| 127.0mm | 2.0 - 5mm | 6.17 - 15.04 |







#### Applications/Advantages

- Low diameter, high thickness tubes
- Used in heavy duty applications like Heavy Machinery & Industrial Equipment, Tower Crane Mast Sections, Gantry Cranes, Trailer Hitch, Rail & Agricultural Machinery.

#### Square

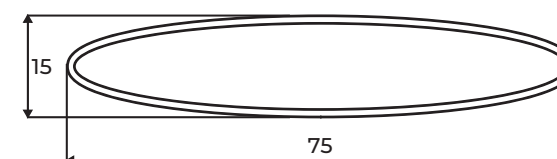
| Size    | Thickness | Weight          |
|---------|-----------|-----------------|
| 30X30mm | 2 - 8mm   | 1.7 - 4.6 kg/m  |
| 40X40mm | 2 - 8mm   | 2.3 - 7.2 kg/m  |
| 50X50mm | 3 - 8mm   | 4.3 - 9.9 kg/m  |
| 60X60mm | 3 - 8mm   | 5.2 - 12.2 kg/m |
| 72X72mm | 4 - 8mm   | 6.4 - 15.2 kg/m |

#### Round

| Size   | Thickness | Weight           |
|--------|-----------|------------------|
| 38.1OD | 3 - 8 mm  | 2.6 - 5.9 kg/m   |
| 48.0OD | 3 - 8 mm  | 3.3 - 7.9 kg/m   |
| 60.3OD | 3 - 8 mm  | 4.2 - 10.3 kg/m  |
| 71.5OD | 3 - 8 mm  | 5.1 - 12.5 kg/m  |
| 76.2OD | 4 - 9 mm  | 7.1 - 14.9 kg/m  |
| 88.9OD | 5 - 10 mm | 10.3 - 19.4 kg/m |

#### Rectangular

| Size   | Thickness | Weight          |
|--------|-----------|-----------------|
| 50X30  | 2 - 8mm   | 2.3 - 7.2 kg/m  |
| 70X30  | 3 - 8mm   | 4.3 - 9.9 kg/m  |
| 60X40  | 3 - 8mm   | 4.3 - 9.9 kg/m  |
| 70X50  | 3 - 8mm   | 5.2 - 12.2 kg/m |
| 100X50 | 3 - 8mm   | 6.6 - 15.9 kg/m |

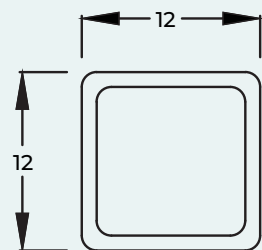


#### Applications/Advantages:

- Used in transformers and as a designer pipe in gates, railings and steel furnitures
- High strength to withstand pressure
- Great durability to endure severe conditions
- Superior quality that ensures longer life
- Economical with minimal maintenance cost

| Size      | Thickness    | Weight(kg/m) |
|-----------|--------------|--------------|
| 75X15 mm  | 1.0 - 2.0 mm | 1.4 - 2.9    |
| 115X57 mm | 2.5 - 5.1    | 2.5 - 5.1    |

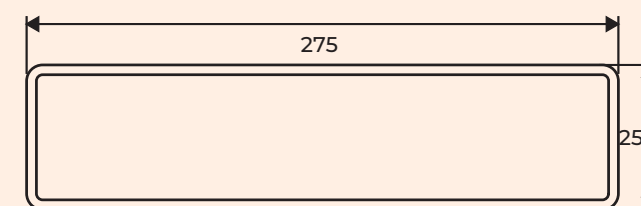




#### Applications/Advantages

- Used in grills, gates and as a design element
- Contemporary design, replacing traditional bar
- High strength to withstand pressure
- Great durability to endure severe conditions
- Lower cost as compared to bars

| Size     | Thickness    |
|----------|--------------|
| 12X12 mm | 1.0 - 2.5 mm |
| 15X15 mm | 1.0 - 2.5 mm |
| 20X20 mm | 1.0 - 2.5 mm |



| Size     | Thickness    | Weight(kg/m) |
|----------|--------------|--------------|
| 125X25mm | 1.6 & 2.0 mm | 3.71 & 4.61  |
| 150X25mm | 1.6 & 2.0 mm | 4.33 & 5.40  |
| 175X25mm | 1.6 & 2.0 mm | 4.96 & 6.18  |
| 200X25mm | 1.6 & 2.0 mm | 5.59 & 6.97  |
| 225X25mm | 1.6 & 2.0 mm | 6.22 & 7.75  |
| 250X25mm | 1.6 & 2.0 mm | 6.85 & 8.54  |
| 275X25mm | 1.6 & 2.0 mm | 7.48 & 9.33  |

#### Applications/Advantages:

- Used in stairs, gates, fencing, furniture, truck closures & scaffolding
- Termite proof
- Fire-resistant
- Better aesthetics
- Cost-effective
- Durable
- Easily recyclable

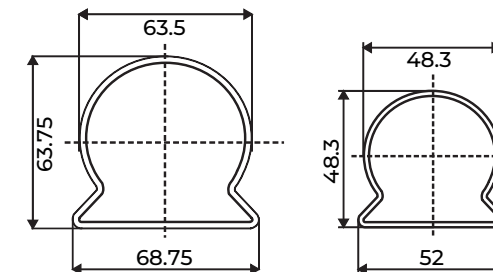
\*Embossed planks are also available





Applications/Advantages:

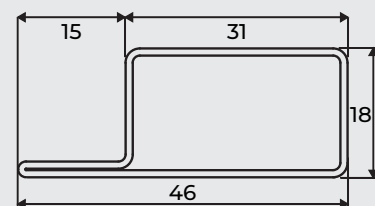
- Used as replacement for Wooden Hand Rail
- High strength that's able to withstand pressure
- Great durability to endure severe conditions
- Superior quality that ensures longer life
- Lightweight, enabling easy movement
- Crafted with precision ensuring uniformity
- Minimal maintenance cost



| Size       | Thickness  | Weight(kg/m) |
|------------|------------|--------------|
| 2.0 inches | 1.4 & 2 mm | 2.03 & 2.88  |
| 2.5 inches | 1.4 & 2 mm | 2.56 & 3.63  |

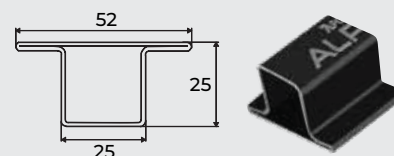
APOLLO  
ALPHA™

WINDOW L SECTIONS



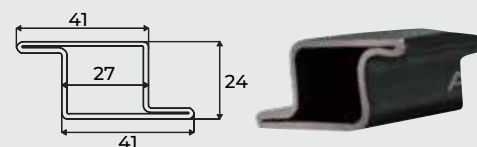
| Size     | Thickness | Weight(kg/m) |
|----------|-----------|--------------|
| 46X18 mm | 1 - 2 mm  | 0.99 - 1.92  |
| 52X24 mm | 1 - 2 mm  | 1.14 - 2.22  |
| 62X33 mm | 1 - 2 mm  | 1.43 - 2.82  |

WINDOW T SECTIONS



| Size     | Thickness | Weight(kg/m) |
|----------|-----------|--------------|
| 52x25 mm | 1 - 2 mm  | 1.15 - 2.24  |

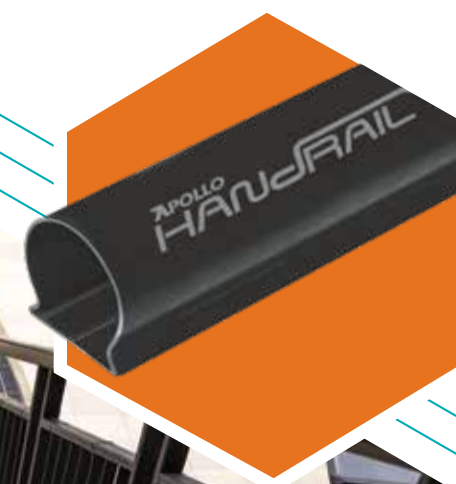
WINDOW Z SECTIONS



| Size     | Thickness | Weight(kg/m) |
|----------|-----------|--------------|
| 41x24 mm | 1 - 2 mm  | 1.17 - 2.29  |

Applications/Advantages

Used in making steel window frames | High strength that's able to withstand pressure | Economical, with minimal maintenance cost | Precision design to ensure a better finish | Innovatively designed to be free from termite

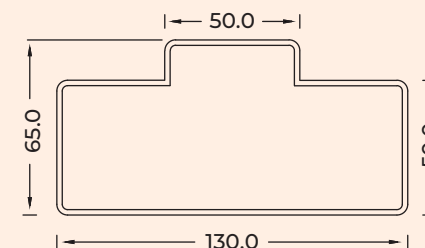






A diagram of a stepped L-shaped polygon. The overall width is 100 and the overall height is 50. The top-right corner is stepped, with a horizontal segment of 40 and a vertical segment of 20. The bottom-right corner is a quarter-circle with a radius of 30.

| Size     | Thickness    | Weight(kg/m)     |
|----------|--------------|------------------|
| 100X50mm | 1.0 - 2.5 mm | 2.60 - 5.33 kg/m |

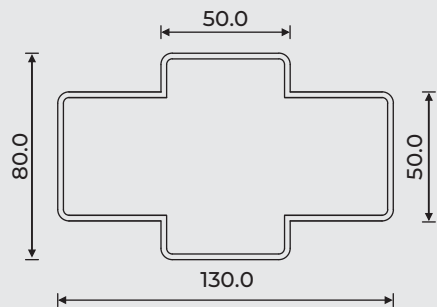


| Size      | Thickness    | Weight(kg/m)     |
|-----------|--------------|------------------|
| 130X65 mm | 1.4 - 2.5 mm | 3.95 - 6.99 kg/m |





## FOUR DOOR FRAME



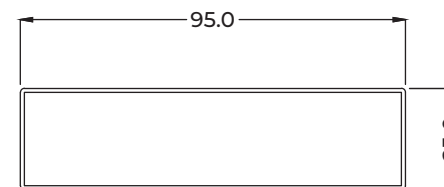
### Applications/Advantages:

- Used in making steel door frames
- Superior quality that ensures longer life
- Great durability to endure severe conditions
- Lower cost compared to wooden frames
- Innovatively designed to be free from termite

| Size      | Thickness    | Weight(kg/m)     |
|-----------|--------------|------------------|
| 130X80 mm | 1.4 - 2.5 mm | 4.20 - 7.42 kg/m |



## APLAPOLLO<sup>®</sup> NARROW<sup>TM</sup>

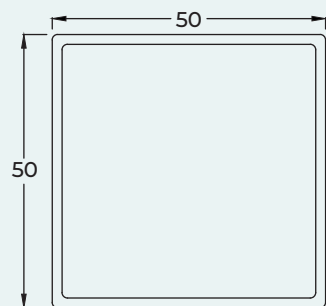


### Applications/Advantages:

- Used in deck & balcony.
- High Strength and Load Bearing Capacity
- Longer Life
- Lightweight compared to Solid Steel Flats
- Uniform Length and Thickness
- Low Maintenance

| Size     | Thickness   | Weight(kg/m) |
|----------|-------------|--------------|
| 40X10 mm | 1.0 - 2.5mm | 0.73 - 1.64  |
| 50X15 mm | 1.0 - 2.5mm | 0.97 - 2.23  |
| 60X10 mm | 1.0 - 2.5mm | 1.05 - 2.42  |
| 95X25 mm | 1.0 - 2.5mm | 1.83 - 4.39  |





#### Features:

- High Strength
- Used for structural purpose
- Non corrosive

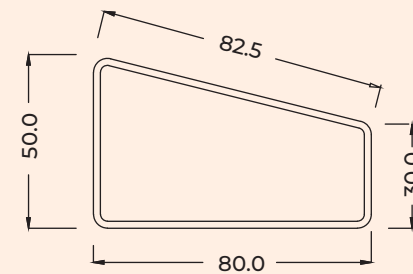
| Size            | Thickness   |
|-----------------|-------------|
| 25X25-100X100mm | 1.6 - 2.0mm |
| 50X25-100X50mm  |             |

*\*Other sections and thickness can be developed as per requirement*



#### Applications/Advantages

- High Strength
- Longer Life
- Low Maintenance Cost
- Used as stopper in parking area

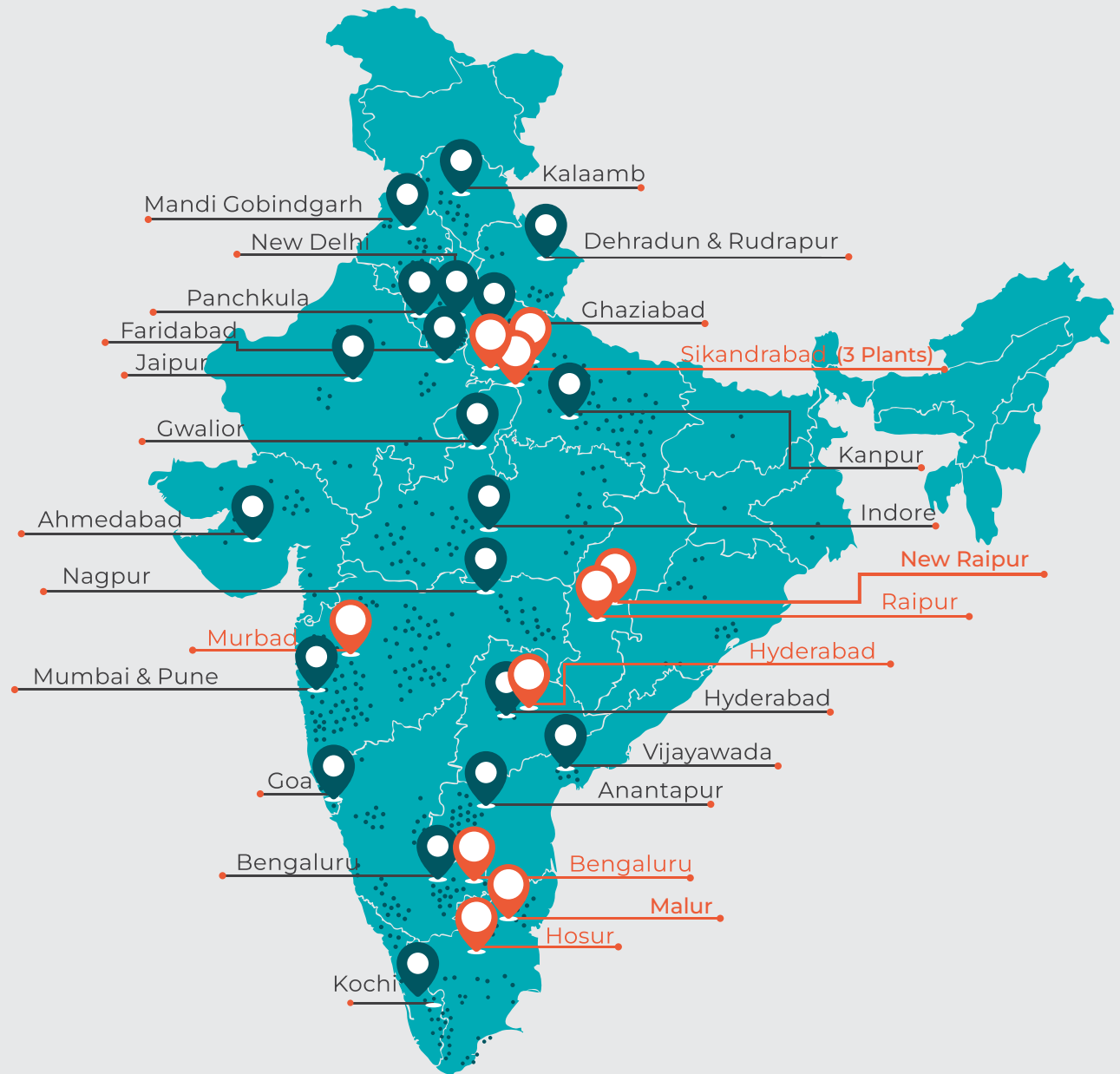


| Size     | Thickness    | Weight(kg/m) |
|----------|--------------|--------------|
| 80X50 mm | 1.0 - 2.5 mm | 1.86 - 4.51  |





# OUR NATIONWIDE PRESENCE



- Branch Offices Cum Warehouses
- Works
- Dealers Network



# OUR NETWORK OF INNER STRENGTH

